



# Ennoconn Technology Group

The AI Industry Chain - Development of Smart Solutions

August, 20, 2024



# Agenda

**1 Ennoconn AI Development Strategy**

**2 Ennoconn AI Technology Application**

**3 Ennoconn AI Actual Cases**

**4 Ennoconn AI Smart Retail**

**5 Q & A**

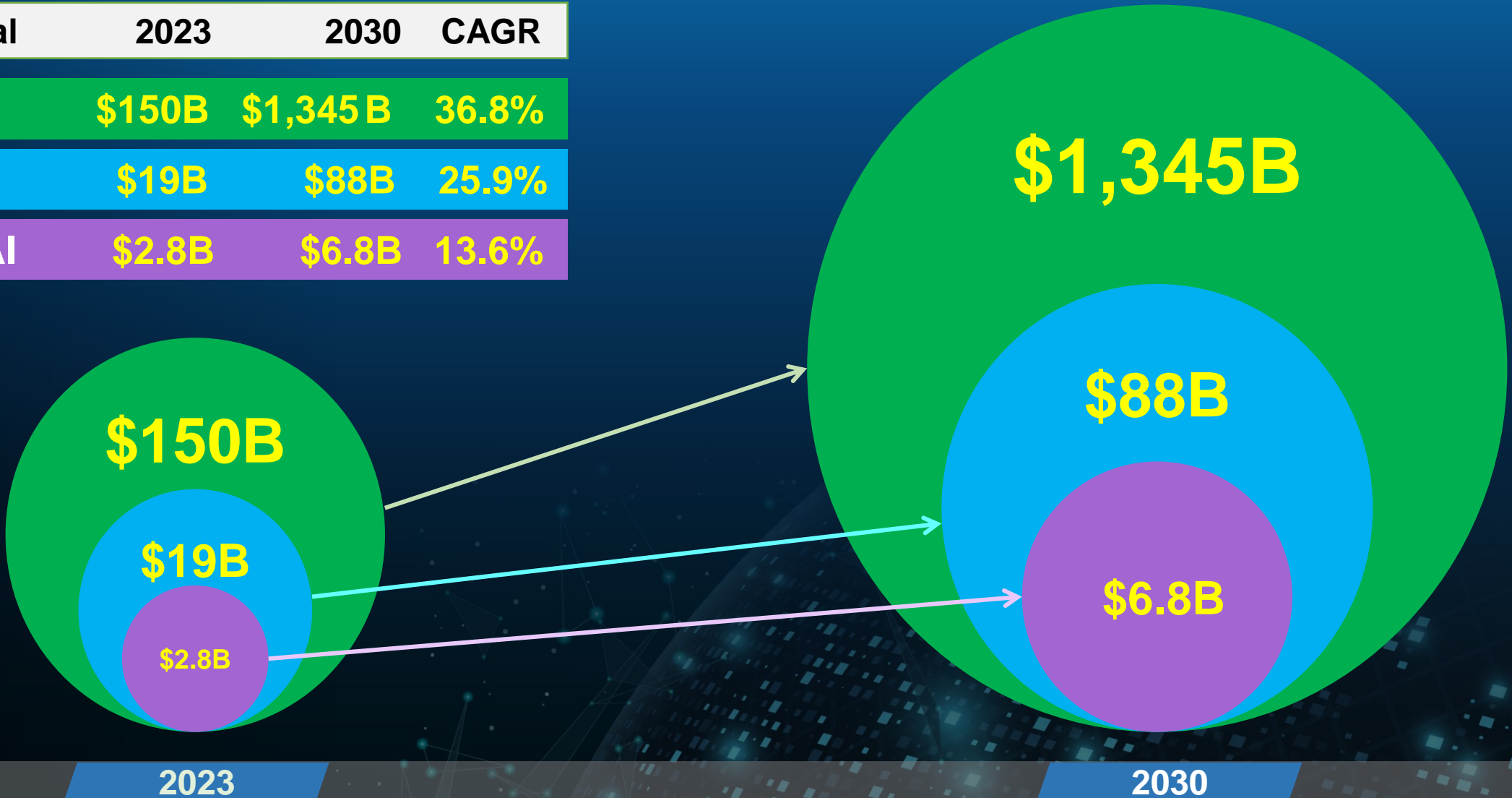
# AI Development Strategy

---

# Global AI Market : software, hardware & Services

(USD\$)

Industrial	2023	2030	CAGR
AI	\$150B	\$1,345B	36.8%
Edge AI	\$19B	\$88B	25.9%
Robot AI	\$2.8B	\$6.8B	13.6%



# Four Stages of AI Product Development

## Edge Computing

### High Performance & Low Power Consumption

- BoxPC, Workstation
- HPC
- AI PC



## AI Sensors/IoT

### Immediacy & Connectivity

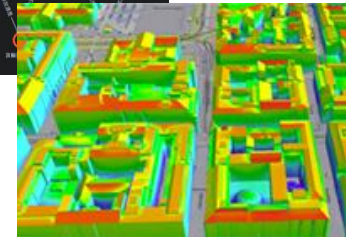
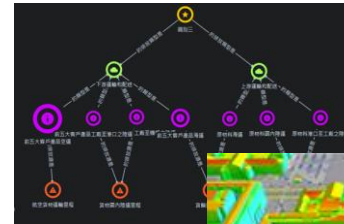
- Industrial IoT Network Security
- Gateway, Sensors, I/O



## AI Algorithms/ Tools

### Precision

- Supply Chain AI Graphic
- Digital Twins Tech



## AI Cloud Application Platform

### Flexibility

- Smart City
- Smart Manufacturing
- Smart Building
- Smart Energy Management
- Energy Storage
- Cyber Security
- Device AI Detection

# Edge AI Applications and Achievements

Edge AI

1. Edge Server 2. Real-time 3. A/V Connection 4. Smart IoT Facilities

1

Autonomous  
driving  
Calculation



2

Smart  
Transportation  
Recognition



3

Device  
Image  
Identification



4

Warehousing  
Robots



5

Smart  
Factory  
Solution



6

Smart  
Medical  
Diagnosis





Compute / MV

1. AMR 2. Humanoid Robot 3. Collaborative Robot 4. Industrial Robot

1

Machine  
Automation



2

Smart  
Robotics



3

Automated  
Guided  
Vehicles



4

3D Machine  
Vision  
Equipment



5

Service  
Robot



6

Agriculture  
AMR



# Edge AI - Hardware

Edge AI applications span multiple industries, including but not limited to:

1. 工業自動化 2. 自動駕駛汽車 3. 智慧城市 4. 醫療設備

## AI Edge



Industrial-grade AI platform



Compact Embedded AI Computing System

## AI Workstation



Workstation-grade AI Fanless System



Workstation-grade In-Vehicle AI Computing System

## AI Server



For deep learning, machine learning, and inferencing with Dual **intel® XEON®** SP processors and High end GPUS from **NVIDIA**

## AI Gateway



Industrial-grade SD-WAN & AI Gateway



## AI Chassis



1U/2U AI Server Chassis





# Edge Computing/Machine Vision Applications in Robot AI

## RESOURCE INTEGRATION

NVIDIA AI Platform + ESaaS + Strategic Partner AI Robert Smart solution

## AI PLATFORM

Various development tools, model parameters, algorithms, and accelerated deployment for artificial intelligence robots.

## TECHNICAL INTEGRATION

Jetson™



Metropolis



Isaac™



## INDUSTRIAL DEVELOPMENT

Provide acceleration and enhancement from simulation to deployment, fostering AI robot intelligence and diversifying applications.

## PARTNER MARKET

Manufacturing

Retail

Warehouse  
Logistic

Smart  
Transportation

Smart  
Agriculture

Smart  
Healthcare

# Ennoconn Q2 2024 Cloud + Edge AI Revenue 3.17B

## Revenue 3.17B Increase 1.19B YoY +59%

Currency: NTD

### 1 Cloud AI Computing



Database



Application SW



App Interface

	2024Q1	2024Q2	QoQ
Product and Service	Group Revenue	Group Revenue	Group Revenue
Cloud AI + Edge AI	1.98 B	3.17 B	59%

1 Cloud AI Computing	2024Q1	2024Q2	QoQ
Product and Service	Revenue	Revenue	Revenue
AI HW + SW + Service	0.82 B	1.48 B	80%

### 2 Edge AI Computing



AI Server



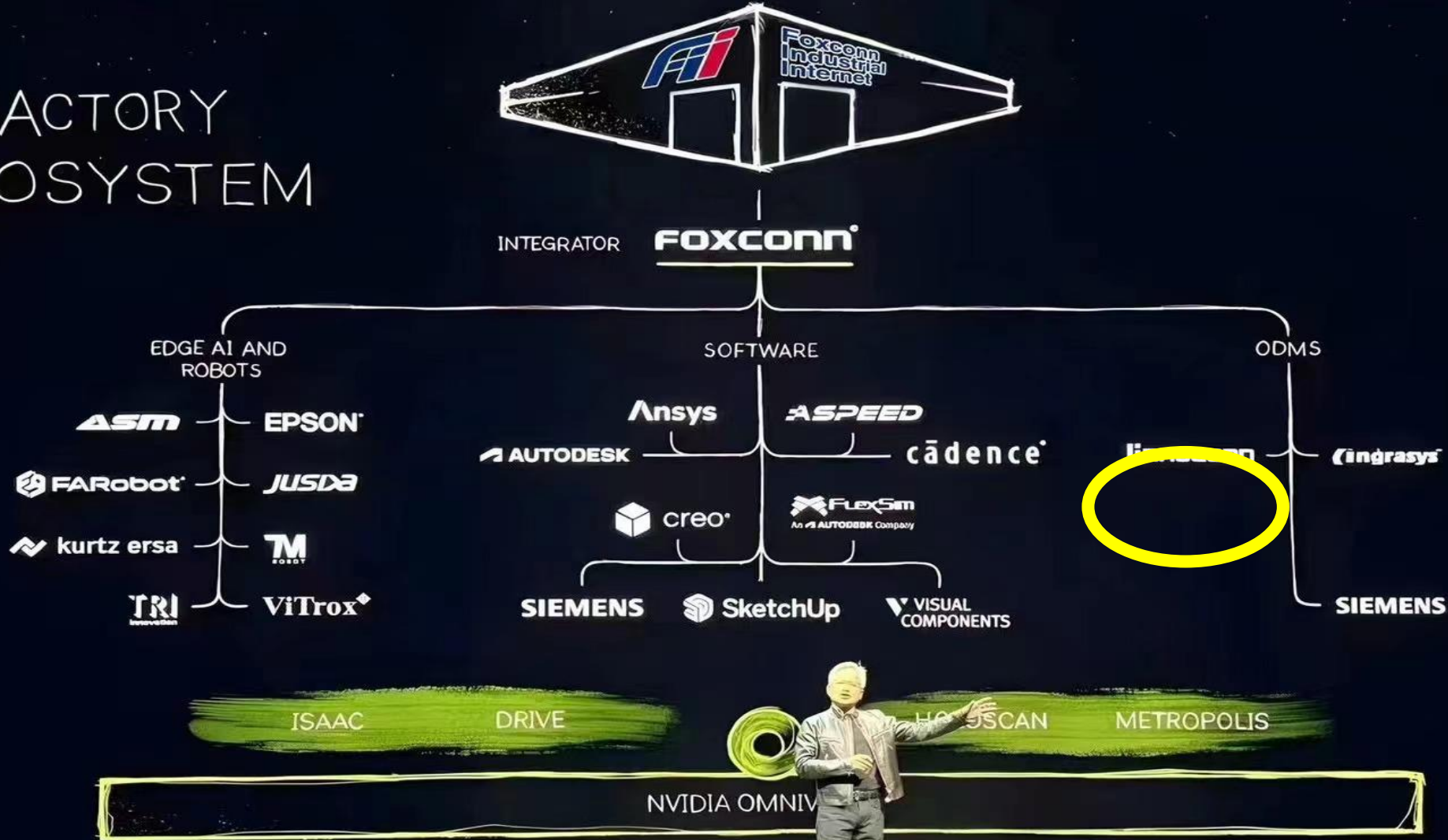
AI Workstation



AI Device

2 Edge AI Computing	2024Q1	2024Q2	YoY
AI HW + SW + Service	Revenue	Revenue	Revenue
AI Server	0.35 B	0.49 B	40%
AI Workstation	0.60 B	0.82 B	37%
AI Device	0.21 B	0.38 B	81%
Total	1.16 B	1.69 B	46%

## FACTORY ECOSYSTEM





# Nvidia AI Eco System in Taiwan



A4EON

acer

ADLINK

ADVANTECH

aetina

AlMobile

aira

安宏生醫

TTV新聞網

ASE

ASRock Rack

ASUS

AVerMedia

FXIOINTEK

BigGo

CH&NBRO

ChozMo

中興大學

COLORFUL

COMPAL

COLESTER

Coretronic

DeepMentor

DeepRad.AI

DELTA

DMKTZ

EDOM

EverFocus

FORESEE AI

FORTUNE AI TECHNOLOGIES

FOXCONN

Garage+

GIANT GROUP

GIGABYTE

GLIACLOUD

GMI

HOMEE.AI

致守大學

INFINITES

ingrasys

INNO3D

inventec

INTEGRA

KENMEC

KTCC

Lanner

LEADTEK

LEDA TECHNOLOGY

律果科技

Linker Vision

LITEON

manit

MEDIATEK

MetAI

MITAC

msi

國立成功大學

國立中央大學

國立臺灣科技大學

國立陽明交通大學

國家網路高速網路設計中心

NEOSYS TECHNOLOGY

NEXCOM

onyx

PALIT

PEGATRON

PROFET AI

QCT

Quanta Computer

SOLOMON

南華科技大學

EPIL

SPINGENCE

StarFab

Stream

ELPERMED

TRI

thermaltake

TRENDi

tsmc

東海大學

CTWS

UMC

Unimicron

Vecow

wlstron

wiwynn

YUAN

ZOTAC

Ennoconn Subsidiary (6414)

Confidential Documents 12

# Global Strategic Partners

## Technology



## B2B Industrial



## B2B Commercial



# Ennoconn Expanding Strategy in Asia



## Establishing Branch Office

Collaboration with Local System  
Integrator to speed up the  
landing of Smart Solutions

## Focusing on Investment of 12 Mega Cities in Asia

Providing Solutions by Subsidiaries  
Global Business Development  
by Ennoconn Group



# AI Technology Application

---

# ESaaS Creating Market Demand



Hang  
Together

Create Technology

Leverage  
Empowerment

Create Application

Create Platform

Create Market

Technology

Application

Platform

Market

# Ennoconn AIoT Smart Solutions

## DEVELOPMENT BLUEPRINT

CORE  
TECHNOLOGY

**AI**

MAIN  
BUSINESS

**City + MFG + ESG**

SMART  
SOLUTIONS

**ESaaS**  
ENNOCONN

## INVESTMENT STRATEGY

**Hardware Based**

**Software Value- Added**

**Brand Channels**

**System Integration**

## HARDWARE DEVELOPMENT



POS



Kiosk



Lottery



ATM



SCO



Cyber Security



HPC



Edge Computing



Mobile IPC



IoT Device

## SOFTWARE DESIGN



Automation



Digitalization



Smartization

AI Engine

AI platform

Vision Engine

Generative Model

Voice Engine

Video Synth

## SOLUTIONS APPLICATION



Cloud



AI



Service

Smart Integration

Cybersecurity

Energy Management

Surveillance System

Digital Twin

E-commerce Platform

## VERTICAL FOCUSING



Smart Campus



Smart Manufacturing



Smart Building



Energy Mgmt.



Energy Storage



Cyber Security



Smart Surveillance



Smart Transportation



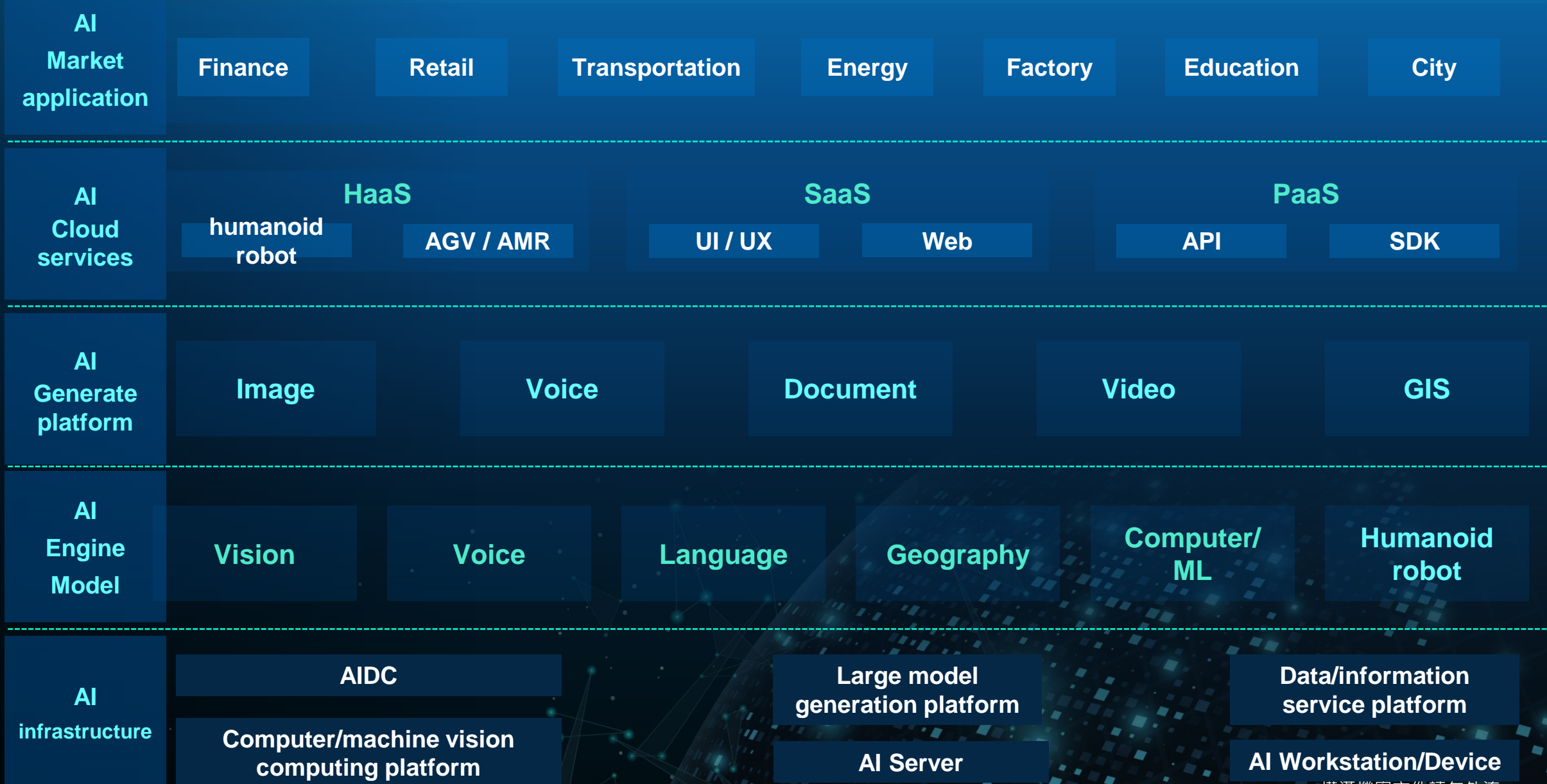
Smart Healthcare

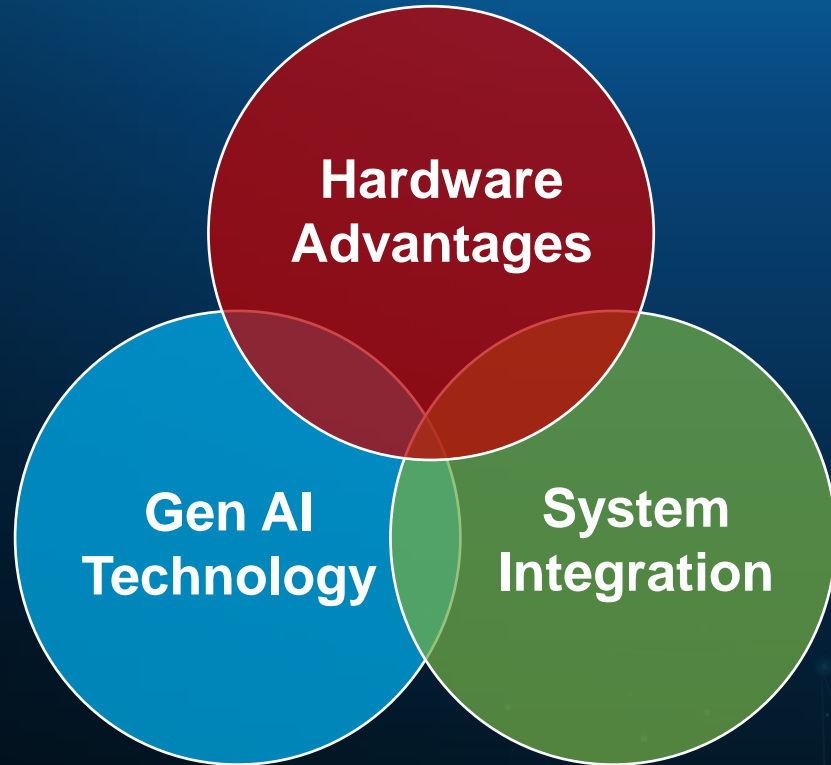


Smart Home



# Technology Applications and Markets





## Gen AI Enterprise import

- Enterprise knowledge base KM establishment
- Introduction of AI assistants according to organizational functions
- Improvement of business productivity

## Gen AI + Digital clone import

- Catering, retail, finance, automobile, medical
- Establishment of KM in specific fields and introduction of RAG technology
- Improve service quality and save labor costs

The subsidiaries of Ennoconn Group in the field of IPC, hardware expertise, system integration technology, combined with generative AI technology Provide more advanced AI solutions for various industries.

# Ennoconn Gen-AI Virtual Assistant- IVI System

## Automotive solutions

- Body Profile Report
- Fuel and fluid level monitoring
- Real-time weather and traffic updates
- Navigation aid
- Maintenance reminders and diagnostics



In-Vehicle Infotainment System



## OpPredict

1. Collect system carbon emissions and sensing data
2. Transmission to cloud management analysis and prediction
3. Optimize system energy efficiency
4. Reduce carbon footprint and optimize service quality



# AI Actual Cases

---



# 嘉義縣 馬稠後智慧產業園區

Chiayi County Machouhou Smart Industrial Park

嘉義縣馬稠後智慧產業園區





## 〈 Factory Building 〉 Analog-driven digital twin



Control equipment: air conditioning box

- Integrate Honeywell system to directly control AHU
- saving effect 6%
- AI rapid deployment only takes 3 days
- The investment cost is only 1/4 of the original

## 〈 Tzu Chi Hospital Hualien Medical Center 〉 Analog-driven digital twin



Control equipment: air conditioning box

- Integrate Honeywell system to directly control AHU
- Energy saving effect 9.8%
- The hospital lobby has a high complexity of people flow. AI is used to replace manpower for real-time air conditioning box control.

## 〈 Taipei Far East Communications Park 〉 Data-driven digital twin



Control device: FCU

- Integrate Siemens system to directly control FCU
- Energy saving effect 10%
- Thousands of blowers can be controlled simultaneously through AI



# Face & Feature Recognition (gender/age/mask/glasses)



Gender: female  
Age#: 30  
respirator: With  
surgical mask

關閉



Gender: male  
Age#: 35  
respirator: Without  
surgical mask

關閉



Gender: male  
Age#: 49  
respirator: Without  
surgical mask

關閉



Gender: male  
Age#: 26  
respirator: With  
surgical mask

關閉



## Intelligent Detection



Occupancy Detection  
of Key Personnel



Unusual Smoke  
Detection



# AI Smart Retail

---



Markets Tech Media Success Perspectives Video



## A Win-Win Strategic Agreement Announced between Ennoconn as Exclusive Hardware Provider for NCR Voyix

NEW TAIPEI CITY, Taiwan, Aug. 06, 2024 (GLOBE NEWSWIRE) -- Ennoconn Corporation (Taiwan Exchange 6414.TW), a global technology company delivering world-class Industrial intelligent IoT, AI and Embedded Technology solutions, today announced that it has entered into a definitive agreement with NCR Voyix (NYSE: VYX) to manage the supply, design, manufacturing, fulfillment, delivery and warranty for its hardware products. NCR Voyix is a leading global provider of digital commerce solutions. Since 2008, Ennoconn has been a proud supplier to NCR Voyix, and this agreement represents a significant milestone for both NCR Voyix and Ennoconn and reflects a shared commitment with NCR Voyix to deliver exceptional technological solutions through this agreement.

“This agreement represents the continued transformation of our hardware delivery model, which has transitioned in recent years from internal to outsourced manufacturing and will now be managed exclusive by Ennoconn, a leading global hardware systems provider, with NCR Voyix serving as the sales agent arranging for the purchase and delivery of hardware to our customers,” said David Wilkinson, CEO of NCR Voyix. “Through this collaboration, our customers will maintain access to market-leading hardware products. NCR Voyix will focus on growing and investing in our software and services capabilities to continue to meet our customers’ evolving needs, drive innovation, and enhance our competitive edge.”

<https://edition.cnn.com/business/newsfeeds/globenewswire/9199474.html>



# Ennoconn+NCR VOYIX Resource Integration



**BOM → Product**

**Price → Value**

## Main Cooperation Concepts

Work together, leverage our strengths, integrate resources, and create business opportunities together

## Essence of resource integration

I am for everyone, everyone is for me; make good use of each other's resources to create common interests

# Ennoconn Provide NCR VOYIX AI Smart Solutions

Ennoconn  
Solutions For Smart Future

AI

NCR VOYIX

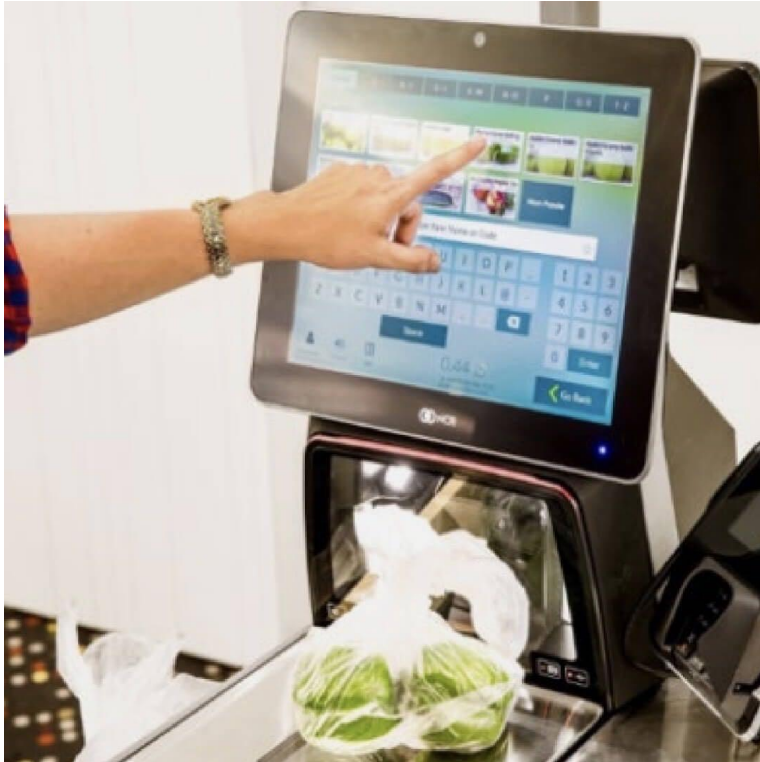


Point-of-Sale System  
Product Series

Kitchen Information System  
Product Series

Self-Checkout System  
Product Series

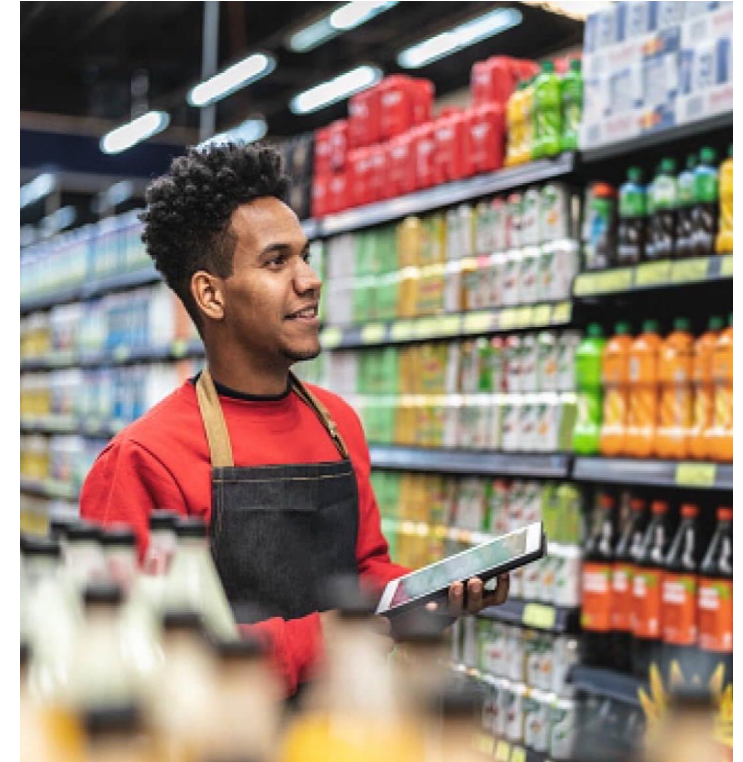
# SCO - AI Value-Added Applications



**AI Machine Vision for Rapid  
Item Recognition in Checkout**



**AI Machine Vision for Optimal  
System Security**



**Employees Provide Remote  
Customer Support for Self-  
Checkout Machines**



# SCO - AI Value-Added Applications



**Provide Consumer Goods and  
Pharmaceuticals,  
Enhancing Customer Experience**



**Offer AI Vision Technology for  
Retail and Professional Sectors**



**Create More Opportunities for  
Convenience Stores and Gas  
Stations**



# CLOUD POS - AI Value-Added Applications



**Customized Self-Checkout  
Services for Individual Stores**



**Provide a Fast and Seamless  
Checkout Service Experience**



**Enhanced Retail Presentation  
for Faster and Smarter  
Decision-Making**

# Q & A

[stockaffairs@ennocnn.com](mailto:stockaffairs@ennocnn.com)



# Thank you